

West Farleigh ATC 01, Lower Road

Produced by Streetwise Services Ltd.



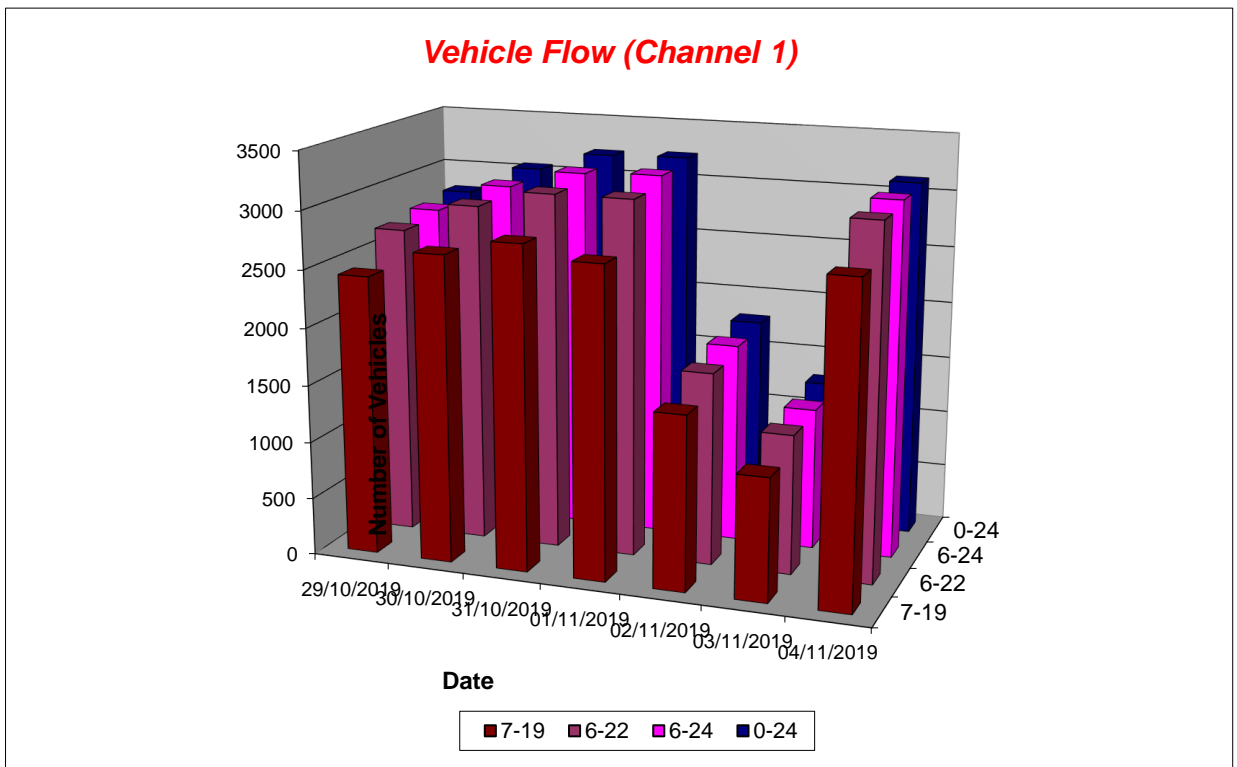
Channel 1 - Eastbound

Vehicle Flow

Week 1

Hr Ending	29/10/2019 Tuesday	30/10/2019 Wednesday	31/10/2019 Thursday	01/11/2019 Friday	02/11/2019 Saturday	03/11/2019 Sunday	04/11/2019 Monday	5 Day Ave	7 Day Ave
1	7	6	15	10	13	22	4	8	11
2	5	4	6	8	6	7	0	5	5
3	3	2	1	1	7	7	0	1	3
4	1	5	3	3	5	3	1	3	3
5	4	2	3	0	9	2	4	3	3
6	26	26	24	24	6	2	17	23	18
7	47	48	62	49	13	8	69	55	42
8	158	155	154	141	50	19	156	153	119
9	145	233	223	199	94	35	210	202	163
10	121	138	170	160	97	34	171	152	127
11	119	132	156	147	123	53	111	133	120
12	137	129	159	155	174	83	150	146	141
13	149	173	166	171	162	149	163	164	162
14	128	152	167	167	155	139	160	155	153
15	202	207	201	219	164	135	185	203	188
16	244	253	296	280	151	131	271	269	232
17	370	395	375	394	125	127	388	384	311
18	381	424	475	407	122	102	463	430	339
19	279	279	269	258	98	61	323	282	224
20	104	117	88	114	63	53	126	110	95
21	55	74	84	136	52	62	62	82	75
22	58	41	52	101	37	27	54	61	53
23	28	40	44	56	39	15	25	39	35
24	25	14	19	28	25	9	16	20	19

7-19	2433	2670	2811	2698	1515	1068	2751	2673	2278
6-22	2697	2950	3097	3098	1680	1218	3062	2981	2543
6-24	2750	3004	3160	3182	1744	1242	3103	3040	2598
0-24	2796	3049	3212	3228	1790	1285	3129	3083	2641



West Farleigh ATC 01, Lower Road

Produced by Streetwise Services Ltd.



Channel 1 - Eastbound

Average Speed

Week 1

Hr Ending	29/10/2019 Tuesday	30/10/2019 Wednesday	31/10/2019 Thursday	01/11/2019 Friday	02/11/2019 Saturday	03/11/2019 Sunday	04/11/2019 Monday
1	45.9	40.5	44.2	40.8	41.8	38.2	40.5
2	41.0	40.5	45.9	42.7	41.3	40.1	-
3	41.3	45.5	55.5	33.0	43.4	37.6	-
4	48.0	41.5	36.3	39.7	36.0	48.8	33.0
5	41.8	40.5	39.7	-	43.3	40.5	40.5
6	42.2	43.2	42.6	41.6	37.2	40.5	41.8
7	40.3	42.1	41.5	40.0	42.4	40.5	39.9
8	39.6	40.3	40.7	39.3	39.8	42.1	40.0
9	38.7	39.7	40.6	39.3	41.9	38.7	41.3
10	39.6	40.4	39.3	38.5	39.2	37.3	39.0
11	38.5	38.5	38.3	38.9	38.3	36.8	38.5
12	39.3	40.0	39.3	39.2	38.6	39.0	37.2
13	39.3	39.3	40.1	40.0	38.5	40.1	38.6
14	39.7	40.3	39.9	40.1	40.0	41.7	38.7
15	39.9	39.5	39.0	39.9	39.8	39.2	39.6
16	39.7	40.2	40.7	39.1	38.2	39.9	39.7
17	39.6	39.5	39.6	39.0	40.5	39.5	39.2
18	38.7	38.3	37.2	36.0	39.3	38.1	37.2
19	38.9	39.3	38.7	34.0	38.1	39.6	38.4
20	40.6	38.9	40.5	36.7	39.2	40.4	38.8
21	41.5	41.2	41.9	34.7	39.7	40.5	39.9
22	42.9	41.2	44.5	36.5	40.4	43.0	41.2
23	41.0	45.1	41.5	37.3	40.2	42.7	41.7
24	43.1	44.8	43.8	39.8	41.9	51.3	45.2
10-12	38.9	39.3	38.8	39.1	38.5	38.1	37.8
14-16	39.8	39.9	40.0	39.5	39.0	39.6	39.6
0-24	39.6	39.7	39.6	38.1	39.4	39.8	39.0

7 Day Ave 39.3

85th Percentile

Hr Ending	29/10/2019 Tuesday	30/10/2019 Wednesday	31/10/2019 Thursday	01/11/2019 Friday	02/11/2019 Saturday	03/11/2019 Sunday	04/11/2019 Monday
1	66.2	48.6	56.5	48.7	48.2	43.1	43.3
2	43.5	43.3	55.9	43.9	43.9	43.7	-
3	48.6	48.3	55.8	33.8	56.2	56.4	-
4	48.3	56.3	38.2	43.0	43.5	56.0	33.2
5	48.3	43.8	43.2	-	48.4	43.1	48.5
6	48.8	48.6	56.1	48.5	48.1	48.8	48.3
7	48.0	49.0	48.4	48.9	56.3	48.4	43.3
8	43.8	43.9	48.4	43.4	48.5	48.5	43.0
9	43.8	43.2	48.7	43.7	48.8	43.5	48.5
10	48.7	48.7	43.3	43.5	43.6	43.2	43.2
11	43.0	44.0	43.6	43.5	43.8	43.3	43.9
12	43.4	48.2	43.2	43.5	43.0	43.1	43.6
13	43.9	43.5	48.2	43.4	43.2	43.6	43.8
14	43.8	48.1	48.6	48.4	48.1	48.2	43.9
15	43.4	44.0	43.1	48.3	43.1	43.9	43.3
16	44.0	43.7	43.5	43.1	43.3	48.1	43.5
17	43.9	43.0	43.9	43.2	43.1	43.4	43.1
18	43.1	43.6	43.3	44.0	43.0	43.3	43.6
19	43.9	43.1	43.8	38.1	43.5	43.9	43.4
20	48.4	43.1	48.4	43.4	43.7	48.8	44.0
21	48.5	48.8	48.3	43.4	48.5	48.3	48.1
22	48.8	48.3	48.9	43.5	43.8	56.2	48.9
23	43.1	55.5	48.6	43.2	48.1	48.3	48.6
24	48.6	55.8	48.6	48.5	48.2	65.6	48.3
10-12	43.5	43.4	43.4	43.3	43.7	43.0	43.1
14-16	43.3	43.3	43.1	43.6	43.5	48.3	43.5
0-24	43.6	43.9	43.6	43.5	43.4	48.8	43.2

7 Day Ave 44.3

West Farleigh ATC 01, Lower Road

Produced by Streetwise Services Ltd.



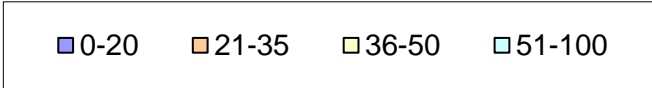
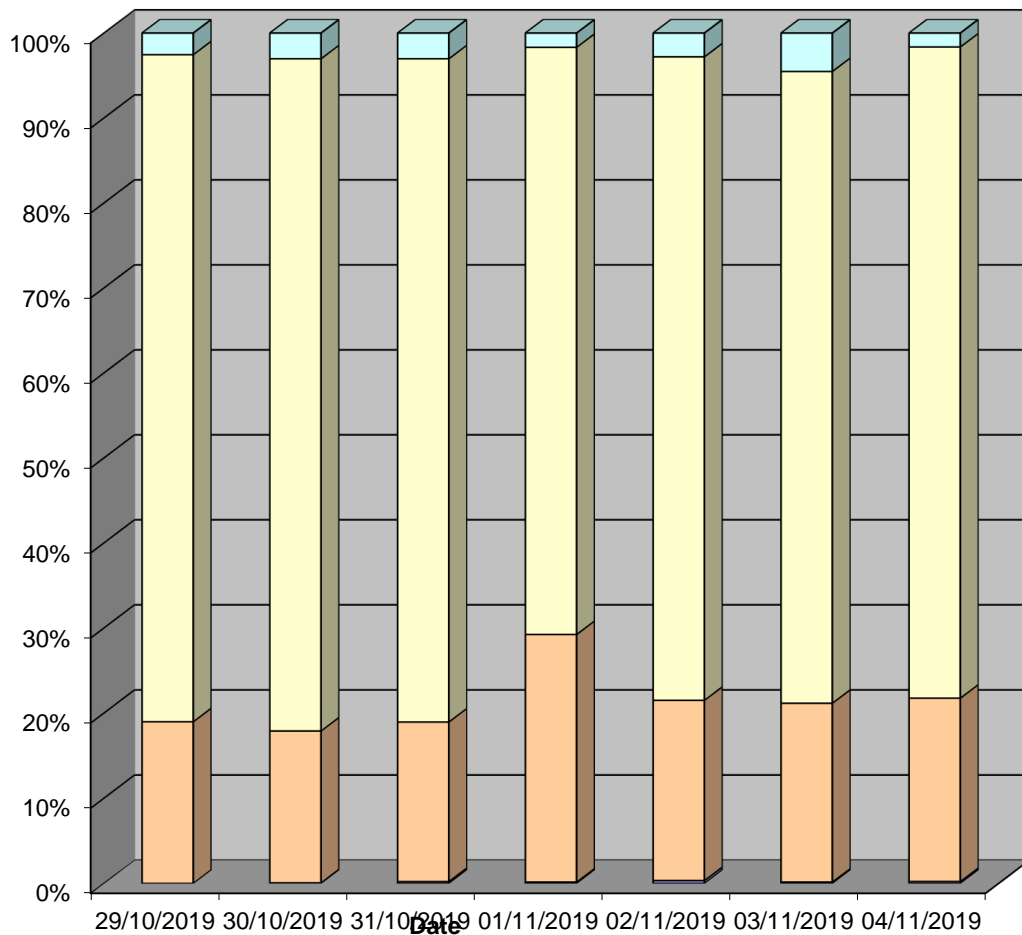
Channel 1 - Eastbound

Speed Summary

Week 1

Speed (MPH)	29/10/2019 Tuesday	30/10/2019 Wednesday	31/10/2019 Thursday	01/11/2019 Friday	02/11/2019 Saturday	03/11/2019 Sunday	04/11/2019 Monday
0-20	0	2	7	5	6	2	7
21-35	531	544	602	939	379	270	674
36-50	2194	2411	2506	2230	1355	955	2397
51-100	71	92	97	54	50	58	51
TOTAL	2796	3049	3212	3228	1790	1285	3129

Speed Summary (MPH)



West Farleigh ATC 01, Lower Road

Produced by Streetwise Services Ltd.



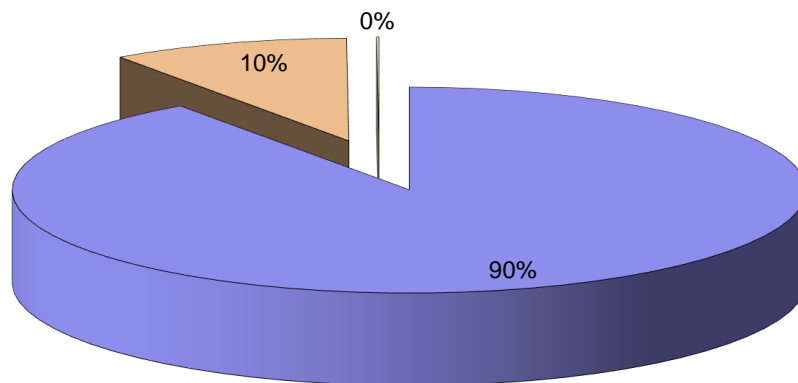
Channel 1 - Eastbound

Vehicle Class

Week 1

Classes Day / Time	Car / LGV / Caravan - 1	OGV1 / Bus - 2,3,5,6,7,12	OGV2 - 4,8,9,10,11,13	TOTAL - 1-13
29/10/2019				
7-19	2121	310	2	2433
6-22	2360	335	2	2697
6-24	2412	336	2	2750
0-24	2451	343	2	2796
30/10/2019				
7-19	2392	274	4	2670
6-22	2648	296	6	2950
6-24	2698	300	6	3004
0-24	2736	307	6	3049
31/10/2019				
7-19	2537	270	4	2811
6-22	2796	295	6	3097
6-24	2851	303	6	3160
0-24	2896	310	6	3212
01/11/2019				
7-19	2434	263	1	2698
6-22	2803	294	1	3098
6-24	2886	295	1	3182
0-24	2926	301	1	3228
02/11/2019				
7-19	1393	121	1	1515
6-22	1548	131	1	1680
6-24	1609	134	1	1744
0-24	1649	140	1	1790
03/11/2019				
7-19	996	71	1	1068
6-22	1137	80	1	1218
6-24	1159	82	1	1242
0-24	1196	88	1	1285
04/11/2019				
7-19	2476	274	1	2751
6-22	2762	299	1	3062
6-24	2801	301	1	3103
0-24	2823	305	1	3129
Average				
7-19	2050	226	2	2278
6-22	2293	247	3	2543
6-24	2345	250	3	2598
0-24	2382	256	3	2641

Total Vehicle Class Distribution



West Farleigh ATC 01, Lower Road

Produced by Streetwise Services Ltd.



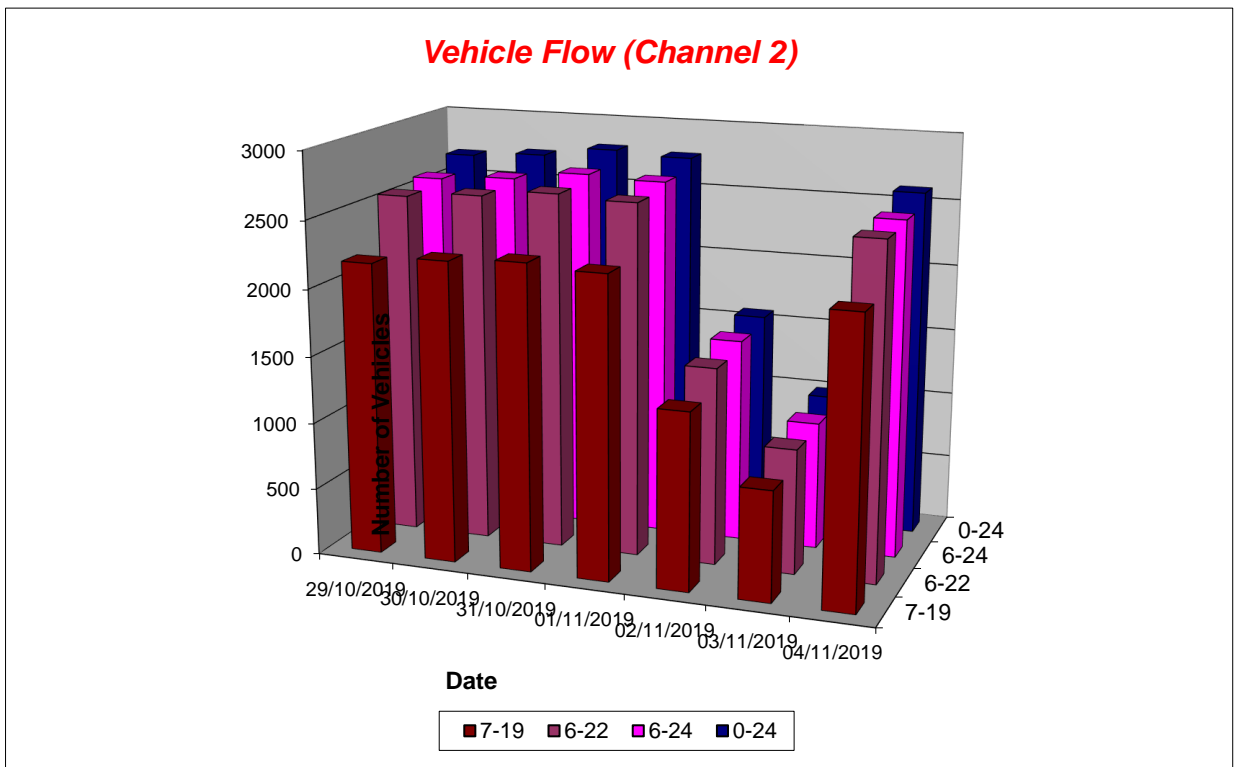
Channel 2 - Westbound

Vehicle Flow

Week 1

Hr Ending	29/10/2019 Tuesday	30/10/2019 Wednesday	31/10/2019 Thursday	01/11/2019 Friday	02/11/2019 Saturday	03/11/2019 Sunday	04/11/2019 Monday	5 Day Ave	7 Day Ave
1	7	5	3	6	6	13	0	4	6
2	4	1	2	5	3	4	1	3	3
3	3	3	4	6	6	6	9	5	5
4	3	5	7	9	4	1	6	6	5
5	12	13	13	13	8	6	12	13	11
6	61	62	64	46	20	8	62	59	46
7	233	206	231	189	56	34	210	214	166
8	453	450	439	398	86	28	436	435	327
9	324	336	337	298	93	31	344	328	252
10	164	185	157	162	97	29	167	167	137
11	121	132	124	137	91	43	129	129	111
12	138	123	144	123	143	49	110	128	119
13	117	127	137	148	127	104	125	131	126
14	122	149	154	132	130	131	122	136	134
15	127	124	142	144	112	107	110	129	124
16	152	160	174	170	118	103	175	166	150
17	194	187	198	169	142	88	160	182	163
18	166	172	170	157	95	68	154	164	140
19	103	97	98	205	86	40	89	118	103
20	74	73	71	104	55	36	71	79	69
21	40	51	47	53	24	24	58	50	42
22	37	33	33	41	20	20	34	36	31
23	24	18	24	33	32	14	19	24	23
24	10	11	21	16	22	9	4	12	13

7-19	2181	2242	2274	2243	1320	821	2121	2212	1886
6-22	2565	2605	2656	2630	1475	935	2494	2590	2194
6-24	2599	2634	2701	2679	1529	958	2517	2626	2231
0-24	2689	2723	2794	2764	1576	996	2607	2715	2307



West Farleigh ATC 01, Lower Road

Produced by Streetwise Services Ltd.



Channel 2 - Westbound

Average Speed

Week 1

Hr Ending	29/10/2019 Tuesday	30/10/2019 Wednesday	31/10/2019 Thursday	01/11/2019 Friday	02/11/2019 Saturday	03/11/2019 Sunday	04/11/2019 Monday
1	50.9	47.0	38.0	49.2	38.0	42.0	-
2	46.8	48.0	51.8	43.0	43.8	41.8	38.0
3	39.7	41.3	49.2	46.3	45.1	46.3	47.4
4	46.3	43.5	46.9	45.5	51.8	48.0	42.2
5	42.6	45.5	45.1	46.5	49.2	41.3	43.4
6	46.5	47.0	45.6	44.5	45.1	47.7	44.1
7	40.8	42.0	42.8	41.2	43.9	46.4	41.0
8	39.3	39.7	40.1	39.8	43.5	42.9	40.2
9	39.0	39.4	39.8	38.8	42.2	41.6	39.5
10	39.0	39.4	41.4	39.7	40.8	39.8	39.5
11	37.8	40.4	40.0	39.2	37.3	42.6	38.5
12	38.5	39.9	38.6	39.3	39.2	37.8	38.3
13	39.2	39.3	39.9	37.4	38.0	41.2	39.7
14	41.0	38.9	38.6	39.7	39.4	39.6	39.5
15	39.3	41.1	39.2	39.7	40.6	41.4	41.3
16	39.7	39.1	39.1	38.3	39.9	40.0	39.4
17	40.6	38.5	40.0	38.3	38.6	39.7	39.5
18	37.4	37.6	38.8	36.6	37.4	39.0	37.0
19	39.1	39.9	40.1	29.7	39.1	40.7	40.2
20	39.9	40.9	41.6	35.5	41.5	41.8	40.6
21	43.2	41.5	40.9	37.5	39.9	42.8	41.0
22	41.6	40.6	44.9	41.5	45.8	41.8	39.3
23	44.0	44.9	43.0	40.2	44.0	41.8	45.1
24	43.2	43.2	44.1	41.1	39.6	41.3	39.2
10-12	38.2	40.2	39.2	39.2	38.4	40.1	38.4
14-16	39.5	40.0	39.1	39.0	40.2	40.7	40.1
0-24	39.7	40.0	40.3	38.5	40.1	40.9	39.8

7 Day Ave 39.9

85th Percentile

Hr Ending	29/10/2019 Tuesday	30/10/2019 Wednesday	31/10/2019 Thursday	01/11/2019 Friday	02/11/2019 Saturday	03/11/2019 Sunday	04/11/2019 Monday
1	86.5	66.2	43.1	65.9	43.8	48.4	-
2	48.1	48.9	55.7	48.9	56.2	48.1	38.3
3	48.0	48.4	55.5	55.6	56.0	55.8	55.5
4	48.3	55.8	48.7	48.6	55.7	48.6	48.7
5	56.0	48.3	48.5	55.8	55.7	48.8	56.3
6	56.4	55.7	56.1	48.1	55.8	48.5	55.8
7	43.5	48.5	48.2	48.2	56.3	55.7	48.7
8	43.4	43.2	43.5	43.1	48.1	48.9	43.4
9	43.8	43.6	43.7	43.4	48.5	48.4	43.8
10	43.8	48.4	48.8	49.0	48.8	48.3	48.7
11	43.7	43.9	48.4	43.5	43.8	56.3	43.4
12	48.7	48.5	43.9	43.5	43.3	43.2	43.1
13	44.0	48.2	43.7	49.0	44.0	48.4	48.4
14	48.3	43.7	43.1	48.2	43.8	43.2	43.3
15	48.5	48.7	43.6	43.4	48.7	48.9	48.7
16	48.4	43.6	48.7	43.4	43.9	48.6	43.3
17	48.7	43.8	43.0	48.3	43.9	43.4	43.8
18	43.2	43.2	43.4	43.5	43.4	43.4	43.2
19	43.4	48.8	48.4	38.1	48.1	48.9	48.6
20	48.5	48.2	48.3	43.5	49.0	48.6	49.0
21	48.8	49.0	49.0	44.0	48.8	48.9	48.2
22	48.5	48.1	56.3	48.6	56.2	48.5	43.9
23	55.9	48.1	48.7	48.9	55.9	55.8	48.1
24	48.5	48.8	55.9	48.7	48.0	48.9	49.0
10-12	48.2	48.4	43.7	43.4	43.2	48.3	43.6
14-16	48.6	43.5	43.3	43.7	48.2	48.3	43.6
0-24	43.5	48.1	48.4	43.1	48.5	48.2	43.9

7 Day Ave 46.2

West Farleigh ATC 01, Lower Road

Produced by Streetwise Services Ltd.

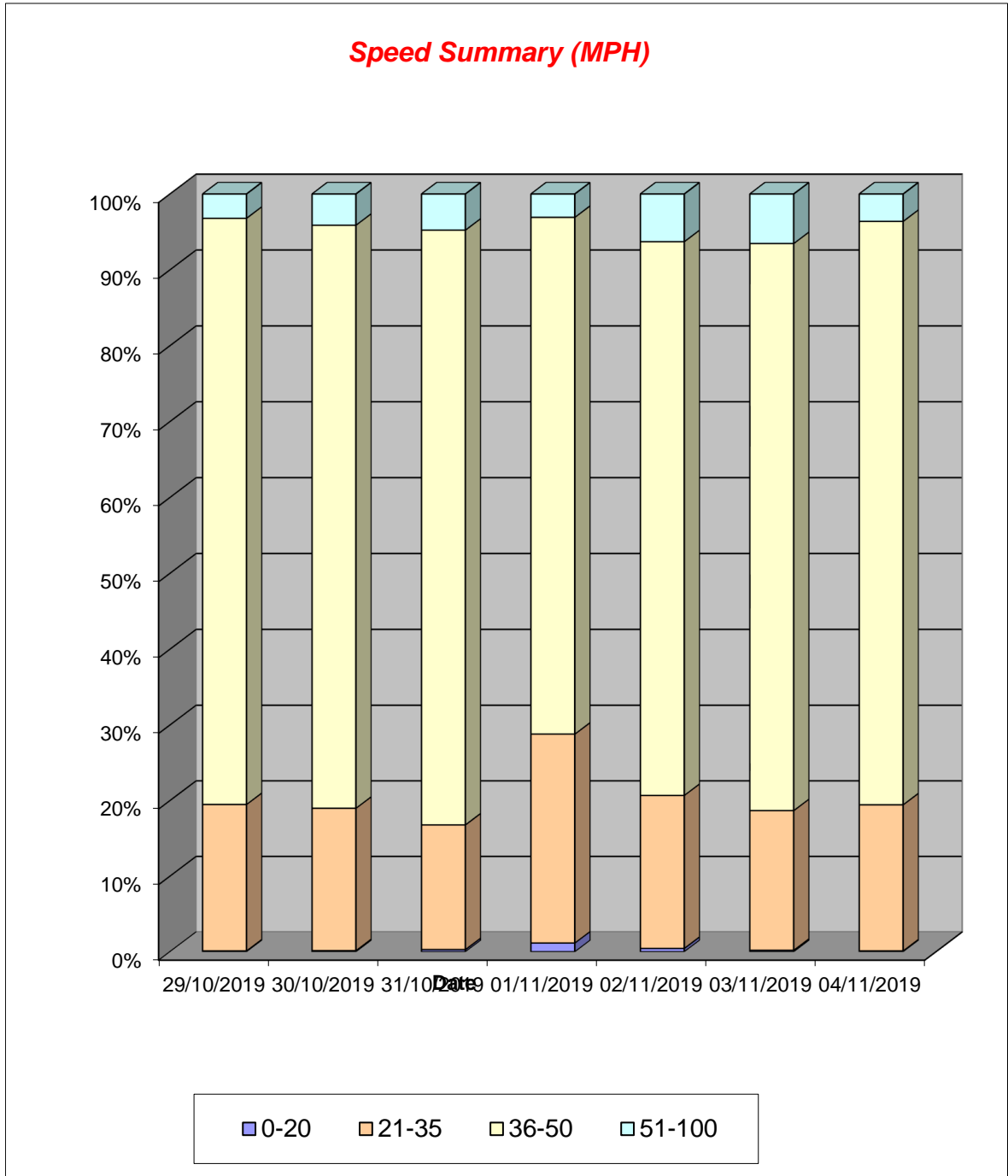


Channel 2 - Westbound

Speed Summary

Week 1

Speed (MPH)	29/10/2019 Tuesday	30/10/2019 Wednesday	31/10/2019 Thursday	01/11/2019 Friday	02/11/2019 Saturday	03/11/2019 Sunday	04/11/2019 Monday
0-20	3	4	8	32	7	2	3
21-35	521	513	461	764	319	184	504
36-50	2079	2094	2192	1883	1151	745	2006
51-100	86	112	133	85	99	65	94
TOTAL	2689	2723	2794	2764	1576	996	2607



West Farleigh ATC 01, Lower Road

Produced by Streetwise Services Ltd.



Channel 2 - Westbound

Vehicle Class

Week 1

Classes Day / Time	Car / LGV / Caravan - 1	OGV1 / Bus - 2,3,5,6,7,12	OGV2 - 4,8,9,10,11,13	TOTAL - 1-13
29/10/2019				
7-19	1950	229	2	2181
6-22	2279	284	2	2565
6-24	2309	288	2	2599
0-24	2388	299	2	2689
30/10/2019				
7-19	1972	268	2	2242
6-22	2289	314	2	2605
6-24	2316	316	2	2634
0-24	2391	330	2	2723
31/10/2019				
7-19	2028	244	2	2274
6-22	2359	295	2	2656
6-24	2399	300	2	2701
0-24	2475	317	2	2794
01/11/2019				
7-19	2001	239	3	2243
6-22	2347	280	3	2630
6-24	2389	287	3	2679
0-24	2457	304	3	2764
02/11/2019				
7-19	1200	120	0	1320
6-22	1340	135	0	1475
6-24	1391	138	0	1529
0-24	1434	142	0	1576
03/11/2019				
7-19	763	57	1	821
6-22	865	69	1	935
6-24	886	71	1	958
0-24	919	76	1	996
04/11/2019				
7-19	1889	230	2	2121
6-22	2217	275	2	2494
6-24	2238	277	2	2517
0-24	2311	294	2	2607
Average				
7-19	1686	198	2	1886
6-22	1957	236	2	2194
6-24	1990	240	2	2231
0-24	2054	252	2	2307

Total Vehicle Class Distribution

